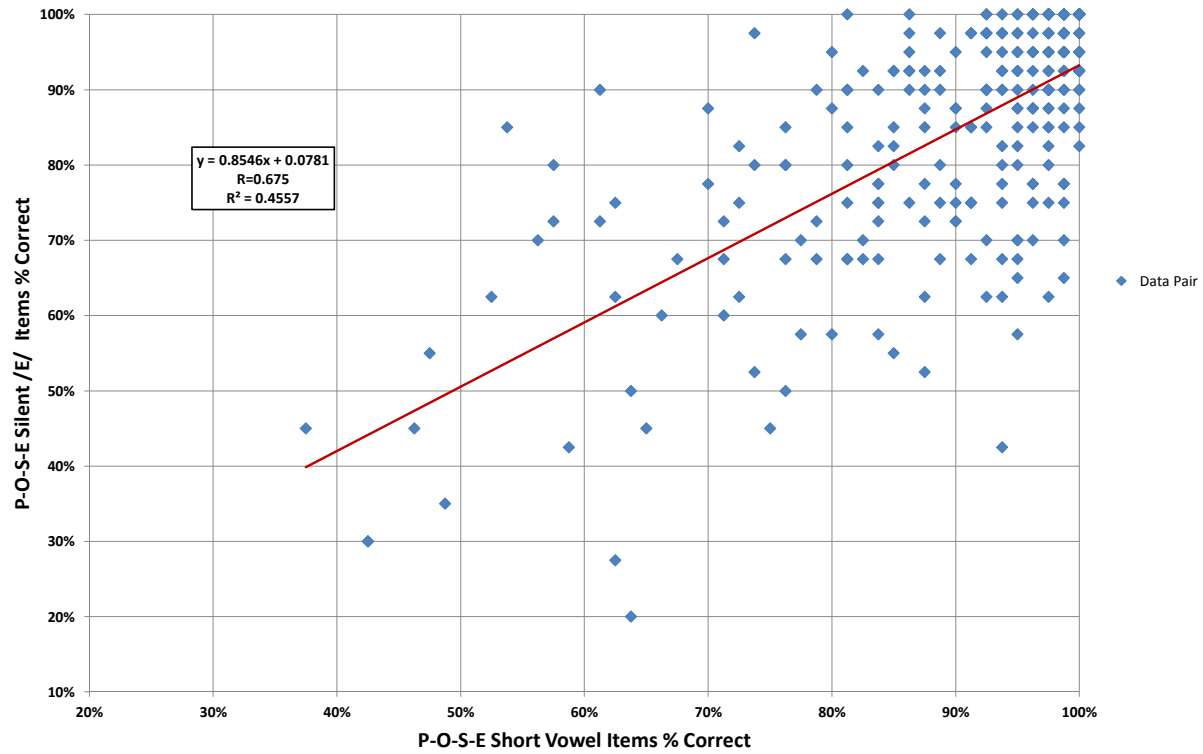


POB Grade 3 2006-7
P-O-S-E Short Vowel Score vs. Silent /e/ Score N=275 Grade 3



SUMMARY OUTPUT

Regression Statistics	
Multiple R	0.675
R Square	0.456
Adjusted R Squ:	0.454
Standard Error	0.117
Observations	275

ANOVA

	df	SS	MS	F	Significance F
Regression	1	3.140	3.140	228.556	6.23536E-38
Residual	273	3.751	0.014		
Total	274	6.890			

	Coefficients	tandard Ern	t Stat	P-value	Lower 95%	Upper 95%ower 95.0%	Upper 95.0%
Intercept	0.078	0.051	1.531	0.127	-0.022	0.179	-0.022
X Variable 1	0.855	0.057	15.118	0.000	0.743	0.966	0.743